

DRAWING NUMBER
53/143

THE POLO CLUB OPEN SPACE PLAT TWO

SITUATE IN SECTION 35, TOWNSHIP 46 SOUTH, RANGE 42 EAST
PALM BEACH COUNTY, FLORIDA.

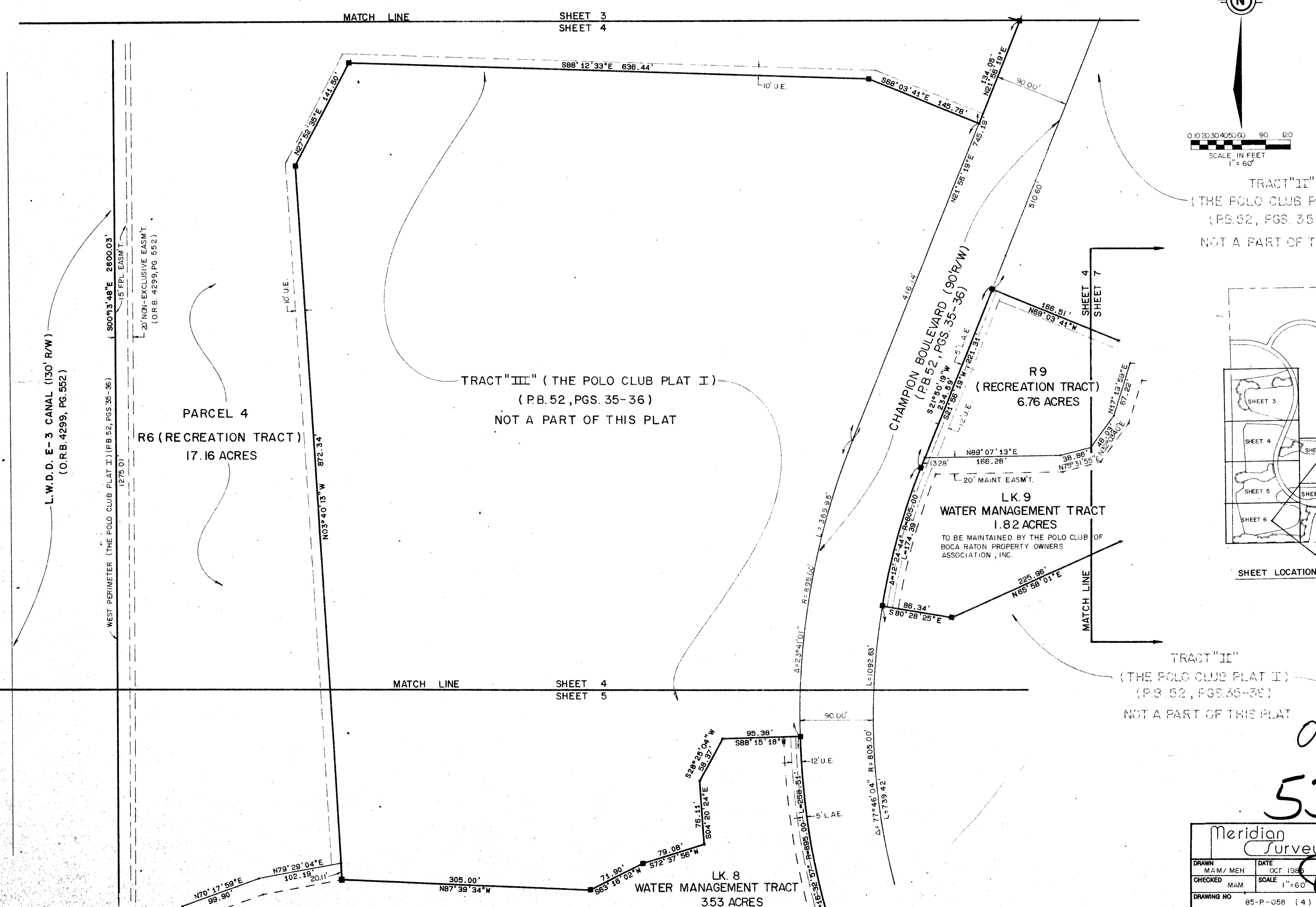
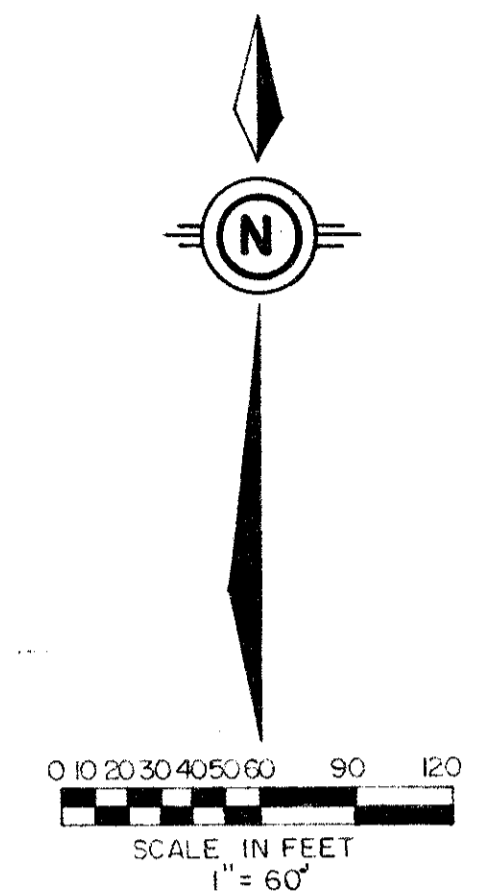
BEING A REPLAT OF A PORTION OF "THE POLO CLUB PLAT I", A P.U.D., AS RECORDED
IN PLAT BOOK 52, PAGES 35 & 36

FEBRUARY, 1986

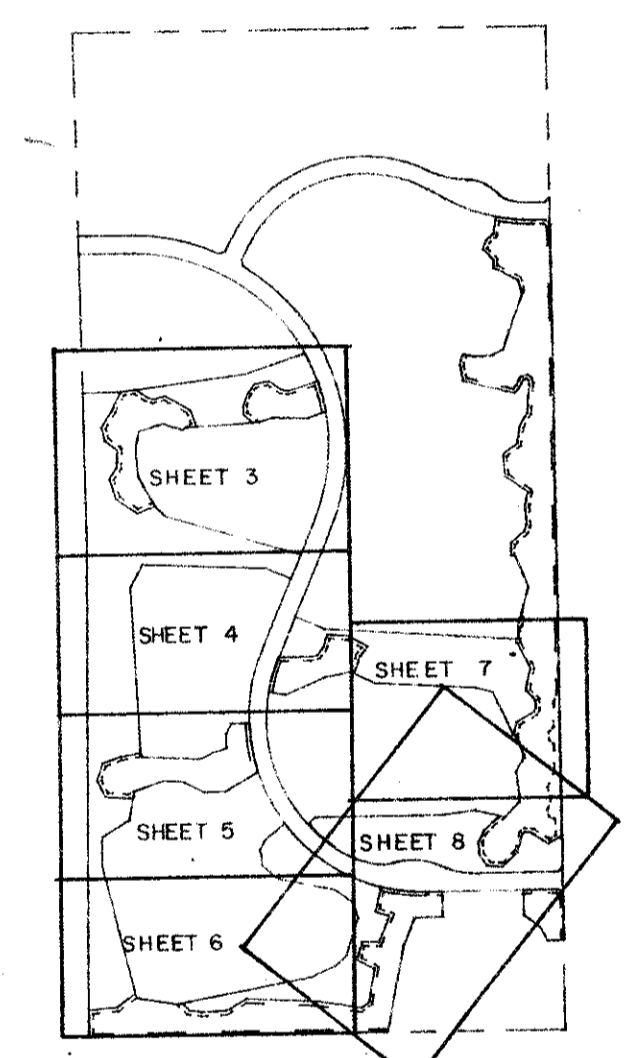
SHEET 4 OF 8

143

STATE OF FLORIDA
COUNTY OF PALM BEACH
THIS PLAT WAS FILED FOR
RECORD AT _____
THIS _____ DAY OF _____
AD, 1985 AND DULY RECORDED
IN PLAT BOOK _____ ON PAGES
_____ AND _____
JOHN B. DUNKLE, CLERK
BY: _____, D.C.



TRACT "II"
(THE POLO CLUB PLAT I)
(PB. 52, PGS. 35--36)
NOT A PART OF THIS PLAT



SHEET LOCATION MAP

TRACT "II"
(THE POLO CLUB PLAT I)
(P.B. 52, PGS. 35-36)
NOT A PART OF THIS PLAT

0430-305
53/143

Meridian Surveying and mapping inc. WEST PALM BEACH, FLORIDA

DRAWN	M.A.M./MEH	DATE	OCT. 1985
CHECKED	MAM	SCALE	1"=60'
DRAWING NO.	85-P-058 (4)	THE POLO CLUB OPEN SPACE PLAT TWO	

DRAWING NUMBER
PLAN HOLD CORPORATION • IRVINE, CALIFORNIA
RECORDED BY NUMBER 0743

DRAWING NUMBER
PLAN HOLD CORPORATION • IRVINE, CALIFORNIA
RECORDED BY NUMBER 0743

DRAWING NUMBER
PLAN HOLD CORPORATION • IRVINE, CALIFORNIA
RECORDED BY NUMBER 0743